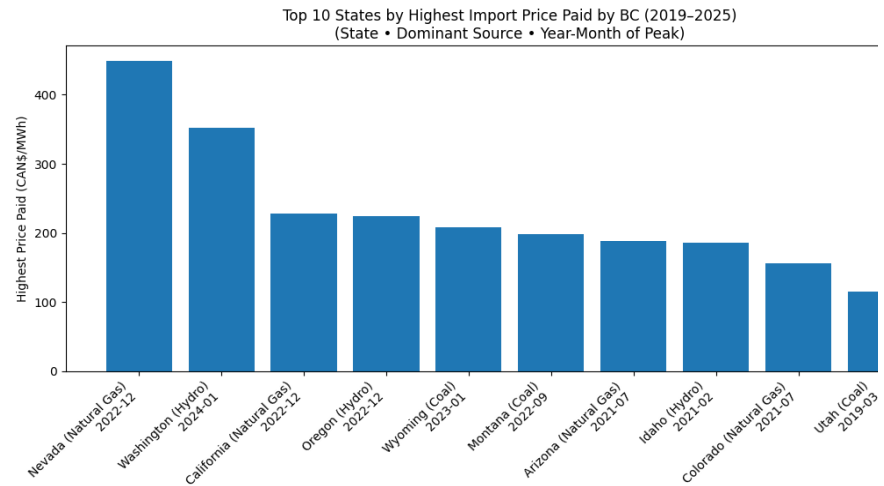


EXPORT	SPL	%		IMPORT	SPL	%
\$/MWh (CDN) BC Electricity sold to Wholesalers in the USA	\$/MWh (CDN) SPL Electricity Sold to Powerex	Percentage of what SPL receives from electricity sold to Powerex for Export to USA		\$/MWh (CDN) purchased by BC from USA	\$/MWh (CDN) SPL Electricity Sold to Powerex	Percentage of what SPL is receives compared to what BC pays USA Producers
93.33	35	38%		56.41	35	62%
223.92	23	10%		104.97	23	22%
162.64	50	31%		115.54	50	43%
93.70	21	22%		29.14	21	72%
107.67	12	11%		22.65	12	53%
178.53	15	8%		26.83	15	56%
116.50	26	22%		33.32	26	78%
134.58	26	19%		34.39	26	76%
172.82	20	12%		34.57	20	58%
118.70	20	17%		40.78	20	49%
125.76	26	21%		42.92	26	61%
88.45	32	36%		42.16	32	76%
86.20	30	35%		71.97	30	42%
80.69	20	25%		21.72	20	92%
75.75	15	20%		32.61	15	46%
88.56	13	15%		25.48	13	51%
97.78	7	7%		22.66	7	31%
71.58	15	21%		11.70	15	128%
310.59	0	0%		21.24	0	0%
329.91	15	5%		50.86	15	29%
146.35	14	10%		79.36	14	18%
120.19	20	17%		40.35	20	50%
125.21	22	18%		32.45	22	68%
34.46	25	73%		34.46	25	73%
81.43	26	32%		63.62	26	41%
401.30	19	5%		185.71	19	10%
106.87	20	19%		33.00	20	61%
95.96	18	19%		47.97	18	38%
115.20	23	20%		48.50	23	47%
382.45	27	7%		86.15	27	31%
386.96	35	9%		187.92	35	19%



247.01	38	15%		67.63	38	56%
317.19	37	12%		87.67	37	42%
131.83	37	28%		71.50	37	52%
157.11	35	22%		51.58	35	68%
217.49	29	13%		60.85	29	48%
119.04	25	21%		63.07	25	40%
128.40	23	18%		44.03	23	52%
124.03	23	19%		39.85	23	58%
176.94	24	14%		87.97	24	27%
186.35	30	16%		66.03	30	45%
274.48	20	7%		27.70	20	72%
287.18	27	9%		68.88	27	39%
396.39	29	7%		117.02	29	25%
874.40	32	4%		221.96	32	14%
191.78	30	16%		83.31	30	36%
272.00	32	12%		112.65	32	28%
747.54	47	6%		448.53	47	10%
454.70	75	16%		207.80	75	36%
289.08	55	19%		100.04	55	55%
238.45	55	23%		99.17	55	55%
235.98	58	25%		109.81	58	53%
116.20	30	26%		20.28	30	148%
277.07	36	13%		63.59	36	57%
330.36	45	14%		128.60	45	35%
873.89	55	6%		129.37	55	43%
319.95	51	16%		106.59	51	48%
390.91	49	13%		121.81	49	40%
260.47	64	25%		134.60	64	48%
228.33	85	37%		83.27	85	102%
1255.31	70	6%		352.65	70	20%
165.90	73	44%		70.09	73	104%
723.42	54	7%		47.66	54	113%
150.41	44	29%		55.75	44	79%
134.75	2	1%		37.63	2	5%
289.90	24	8%		40.66	24	59%
308.50	45	15%		75.15	45	60%
287.58	49	17%		45.80	49	107%
284.93	43	15%		56.16	43	77%
254.44	43	17%		59.84	43	72%
132.24	31	23%		41.76	31	74%

177.99	47	26%		47.20	47	100%
165.48	36	22%		70.89	36	51%
214.51	45	21%		81.59	45	55%
136.41	45	33%		41.28	45	109%
103.84	19	18%		31.30	19	61%
110.88	22	20%		46.39	22	47%
422.34	32	8%		50.79	32	63%
423.77	38	9%		75.30	38	50%
432.49	31	7%		56.01	31	55%
451.32	29	6%		61.59	29	47%
118.93	27	23%		52.84	27	51%
*	36	0%		*	36	0%
*	47	0%		*	47	0%
248.34	33.07			75.67	33.07	

*these figures are not available as of February 17, 2026
 SOURCE: Canadian Energy Regulator www.cer-rec.gc.ca



>